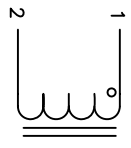


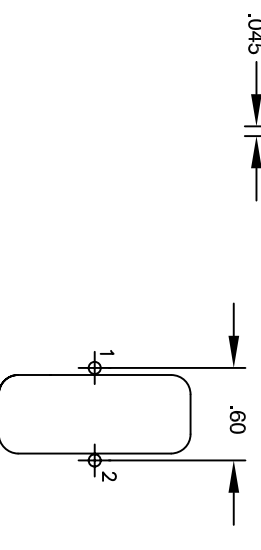
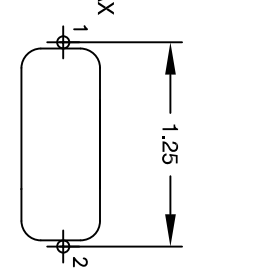
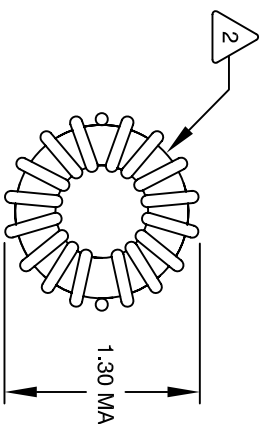
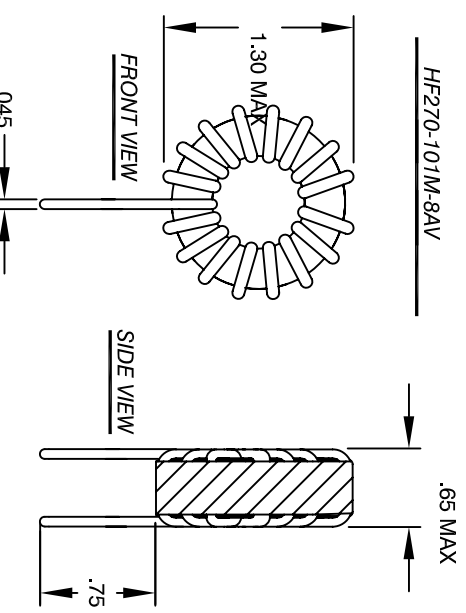
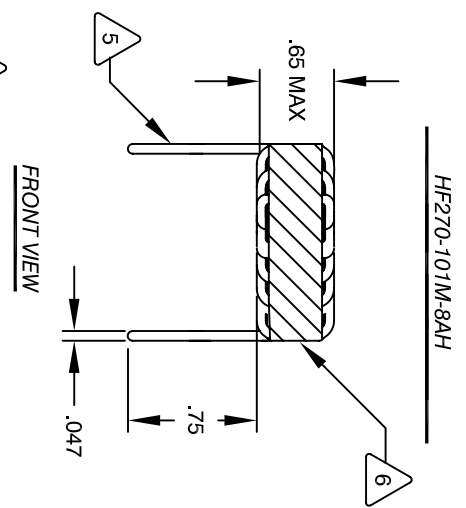
The information contained in this drawing is the sole property of CMS Coil Winding Specialist. Any reproduction in part or whole without written permission of CMS Coil Winding Specialist is prohibited.

REVISION HISTORY

REV	ECN	DESCRIPTION	BY	DATE	CHK	DATE
B		PRODUCTION RELEASE	TKK	2/09/04	JLJU	2/9/04



SCHEMATIC



6 USING A PERMANENT MARKING METHOD MARK PART NUMBER AND REVISION, IF APPLICABLE IF NEEDED, WRAP INDUCTOR WITH GLASS TAPE TO THE CORE

5 MUST REST FLAT ON PCB, LEADS MUST BE TANGENT FLUSH WITH THE COIL EDGE, AS SHOWN (I.E. COIL REMOVE INSULATION AND TIN LEADS 0.75 INCH

4 WIND COILS EVENLY SPACED AROUND THE CORE CONSTRUCTION:

H-POT TEST FOR WINDING TO CORE ISOLATION = 500VDC MIN  
 CURRENT RATING : 10 AMPS, 40 °C TEMP. RISE, NO AIR FLOW  
 DCR = 23 MILL-OHMS MAX.  
 DC BIASED 8 AMPS, INDUCTANCE = 85 UH  
 DC BIASED 10 AMPS, INDUCTANCE = 80 UH  
 INDUCTANCE = 100 UH +-10% @ LOW DC BIAS, 1 KHZ, 250mv  
 3 SPECIFICATIONS:

2 WIRE: UL RECOGNIZED 200°C RATED MAGNET WIRE  
 CWS BYTEMARK OR OTHER APPROVED PART  
 CORE: COATED HIGH FLUX TOROIDAL CORE

1 RATING CLASS B (130°C MIN.) REQUIRED  
 MATERIAL: UL RECOGNIZED 94V-0 FOR FLAMMABILITY

NOTES: TOROIDAL POWER CHOKE. ALL DIMENSIONS IN INCHES

CODE IDENT	MFG. P/N	DESCRIPTION	ITEM NO.
		<b>PARTS LIST</b>	
AUTOCAD SOLIDWORKS		CWS Coil Winding Specialist. 1510 E. Edinger Ave. Unit B, Santa Ana, CA. 92705	
DRWN	DATE	CHKD	DATE
TKK	2/8/04	JLJU	2/9/04
ENGR	DATE	APPR	DATE
KSUM	3/5/04	JLJU	3/6/04
TITLE:		SIZE	REV
Toroidal Power Chokes Toroid Inductor		DWG. NO.	B
		HF270-101M-8A	B
DO NOT SCALE DRAWING		SCALE	SHEET
		2=1	1 OF 1